

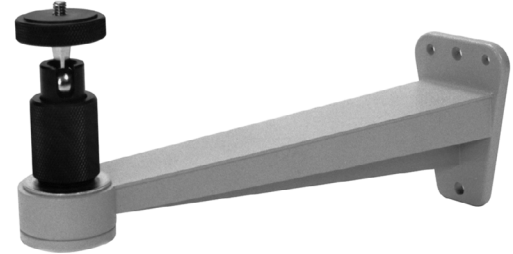


## CM1450 Mount

### WALL MOUNT, CAMERA

#### Product Features

- Low Cost Wall Mount
- Decorator Styling
- Supports up to 7 Pounds (3.2 kg)
- Adjustable Swivel Head
- Accommodates Light-Duty Cameras
- Can be Adapted for Pole Mount Applications With Use of PA101 Adapter

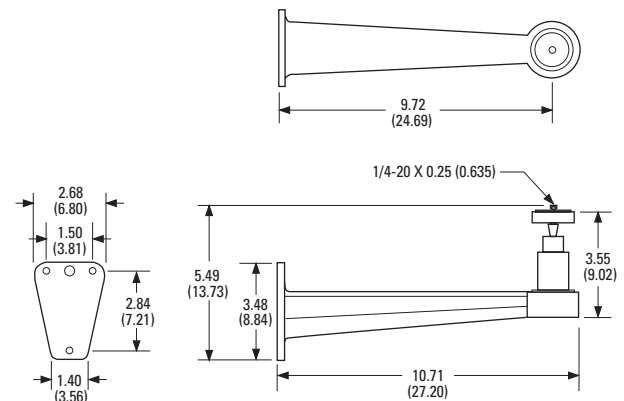


The **CM1450** is a light-duty camera mount designed for wall mount applications.

The **CM1450** is manufactured from aluminum and die-cast for low cost efficiency. It features an easily adjustable swivel head, which allows for 360-degree pan rotation and 90-degree tilt adjustments. The **CM1450** utilizes a set screw for final positioning of the swivel assembly.

The **CM1450** will accommodate cameras weighing up to 7 pounds (3.2 kg).

The **CM1450** can also be adapted for pole mount applications when used with a Pelco PA101 adapter.



NOTE: VALUES IN PARENTHESES ARE CENTIMETERS;  
ALL OTHERS ARE INCHES.



# TECHNICAL SPECIFICATIONS

## MODEL

CM1450

Light-duty camera mount with adjustable swivel head for wall mount applications

## RELATED PRODUCT

PA101

Pole mount adapter for CM1450 mount. Stainless steel straps supplied. Straps fit 3-inch (7.62 cm) to 8-inch (20.32 cm) diameter pole.

## MECHANICAL

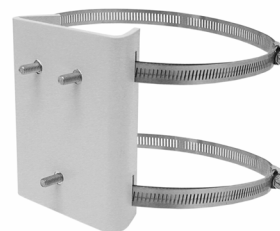
Pan Adjustment	360°
Tilt Adjustment	90°
Locking Method	Set screw secures swivel assembly
Camera Mounting	1/4-20 threaded stud and nut
Mounting Method	Secure with three 1/4-inch diameter fasteners to solid surface or use one 5/16-inch diameter and one 1/4-inch diameter fastener where wall studs are encountered. (Fasteners not supplied.)

## GENERAL

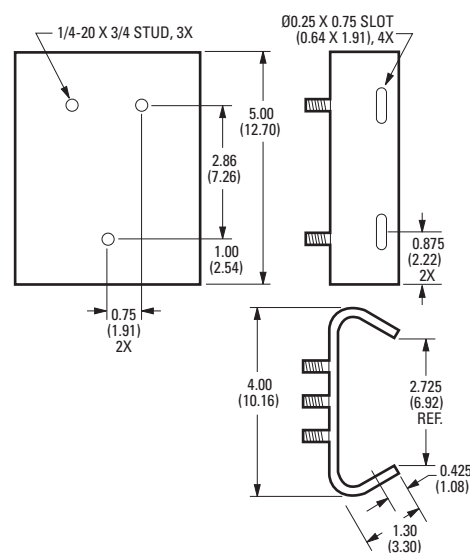
Construction	Aluminum
Finish	Gray polyester powder coat
Maximum Load	7 lb (3.2 kg)
Unit Weight	
CM1450	1.2 lb (0.5 kg)
PA101	0.88 lb (0.4 kg)
Shipping Weight	
CM1450	2 lb (0.9 kg)
PA101	2 lb (0.9 kg)

## CERTIFICATIONS

- UL Listed



PA101 POLE ADAPTER



NOTE: VALUES IN PARENTHESES ARE CENTIMETERS; ALL OTHERS ARE INCHES.

PA101 DIMENSION DRAWING



### Pelco Worldwide Headquarters:

3500 Pelco Way, Clovis, California 93612-5699 USA  
**USA & Canada** Tel: (800) 289-9100 • FAX (800) 289-9150  
**International** Tel: (559) 292-1981 • FAX (559) 348-1120  
[www.pelco.com](http://www.pelco.com)

Pelco and the Pelco logo are registered trademarks of Pelco.  
Specifications subject to change without notice.  
©Copyright 2006, Pelco. All rights reserved.