

2-megapixel • Tamper Detection

NETWORK CAMERA

Quick Installation Guide

English | 繁体中文 | 简体中文 | 日本語 | Français | Español | Deutsch | Português | Italiano | Türkçe | Polski | Русский | Česky | Svenska | العربية



IP7160

This guide describes the basic functions of IP7160.

All detailed information is described in the user's manual.



Warning Before Installation

- **Power off the Network Camera as soon as smoke or unusual odors are detected.**
- **Keep the Network Camera away from water. If the Network Camera becomes wet, power off immediately.**

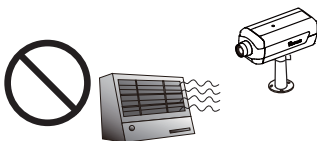
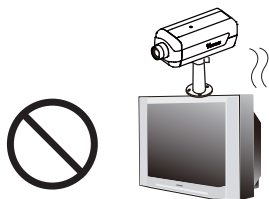


Contact your distributor in the event of occurrence.

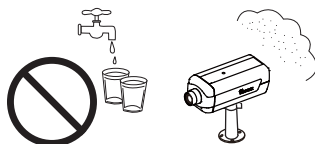
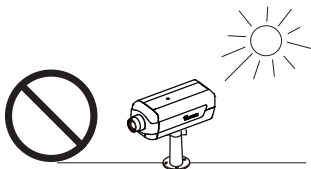


Contact your distributor in the event of occurrence.

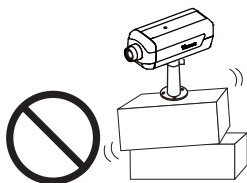
- **Do not place the Network Camera around heat sources, such as a television or oven.**
- **Refer to your user's manual for the operating temperature.**



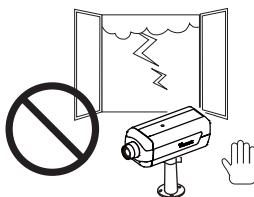
- **Keep the Network Camera away from direct sunlight.**
- **Do not place the Network Camera in high humidity environments.**



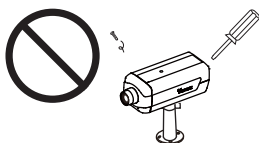
● Do not place the Network Camera on unsteady surfaces.



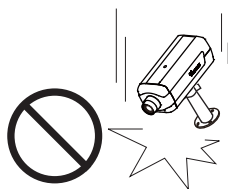
● Do not touch the Network Camera during a lightning storm.



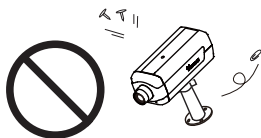
● Do not disassemble the Network Camera.



● Do not drop the Network Camera.



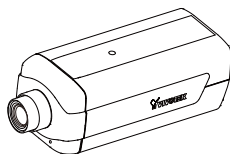
● Do not insert sharp or tiny objects into the Network Camera.



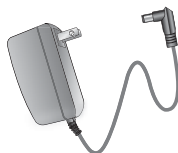
1

Package Contents

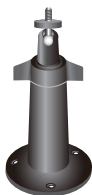
● IP7160



● Power Adapter



● Camera Stand



● Software CD

● Quick Installation Guide /
Warranty Card

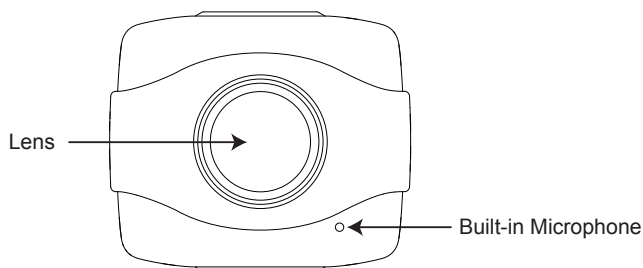
● L-type Hex Key Wrench



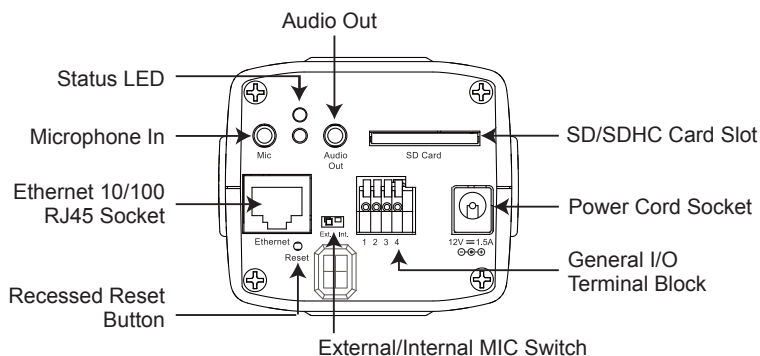
2

Physical Description

Front Panel



Back Panel

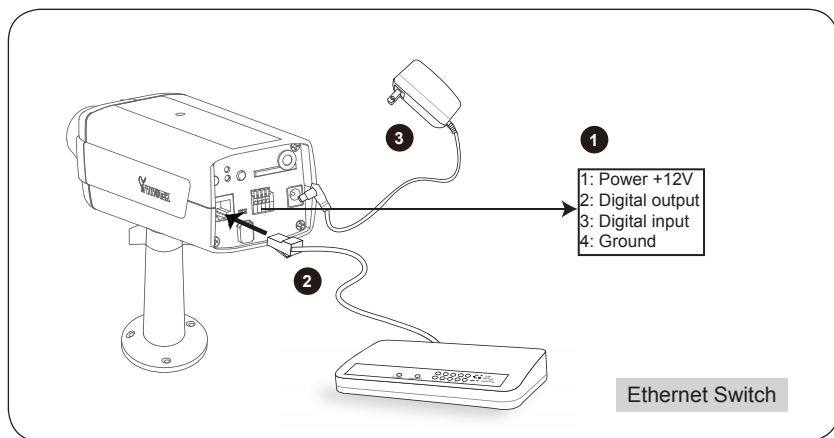


3

Network Deployment

General Connection (without PoE)

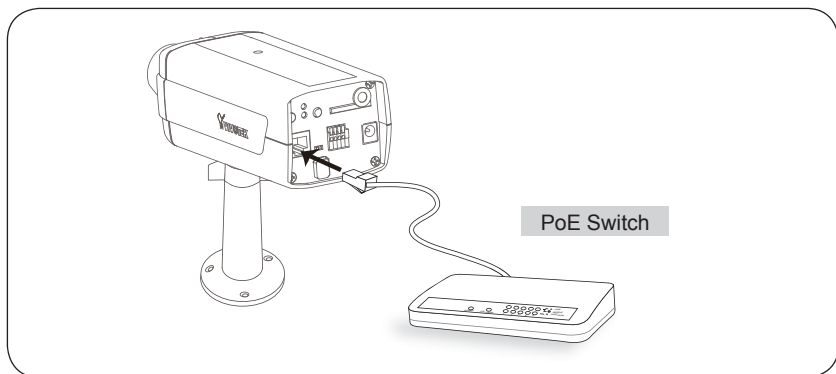
1. If you have external devices such as sensors and alarms, connect them to the general I/O terminal block.
2. Connect the camera to a switch via Ethernet cable.
3. Connect the supplied power cable from the camera to a power outlet.



Power over Ethernet (PoE)

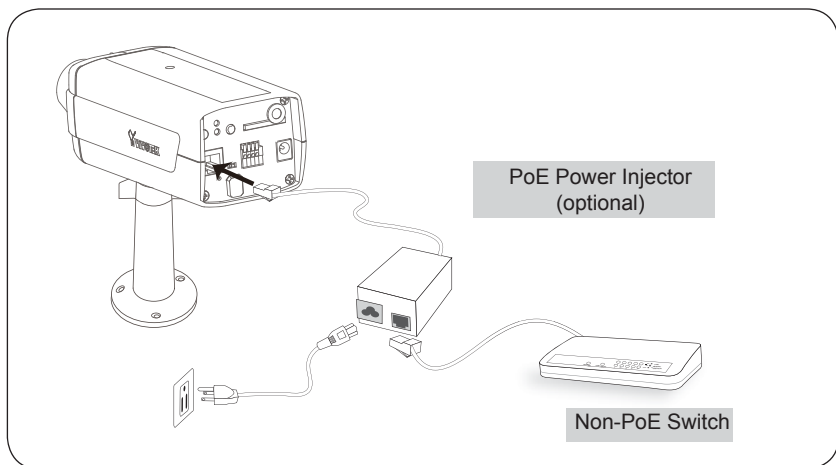
● When using a PoE-enabled switch

This Network Camera is PoE-compliant, allowing transmission of power and data via a single Ethernet cable. Follow the below illustration to connect the camera to a PoE-enabled switch via Ethernet cable.



● When using a non-PoE switch

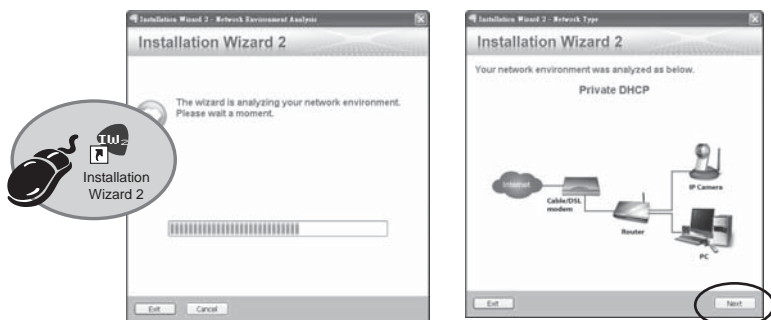
Use a PoE power injector (optional) to connect between the Network Camera and a non-PoE switch.



4

Assigning an IP Address

1. Install "Installation Wizard 2" from the Software Utility directory on the software CD.
2. The program will conduct an analysis of your network environment. After your network is analyzed, please click on the "Next" button to continue the program.



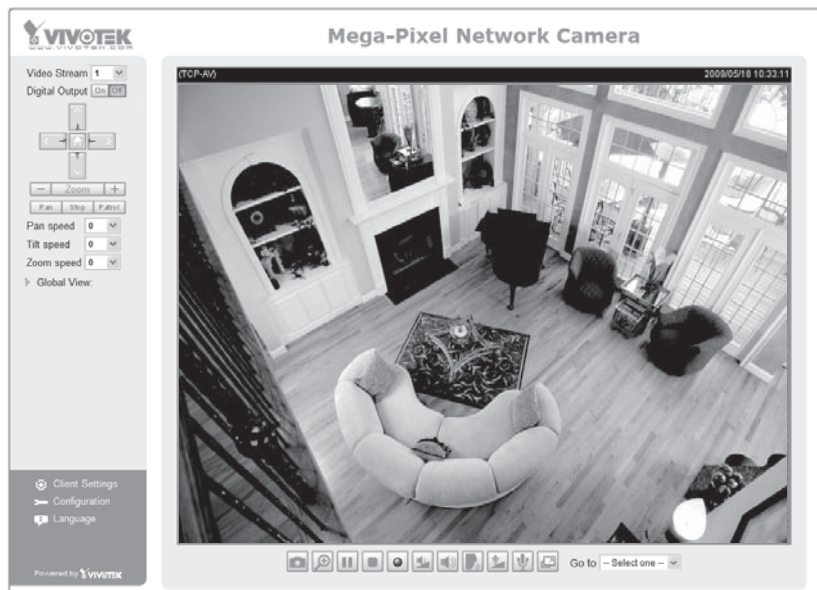
3. The program will search for VIVOTEK Video Receivers, Video Servers, and Network Cameras on the same LAN.
4. After searching, the main installer window will pop up. Click on the MAC that matches the one labeled on the bottom of your device to connect to the Network Camera via Internet Explorer.



5

Ready to Use

1. Access the Network Camera on the LAN.
2. Retrieve live video through a web browser or recording software.



For further setup, please refer to the user's manual on the software CD.



P/N: 625008400G Ver.1.01
Copyright © 2009 VIVOTEK INC. All right reserved.

6F, No.192, Lien-Cheng Rd., Chung-Ho, Taipei County, Taiwan | T: +886 2 82455282 | F: +886 2 82455532 | E: sales@vivotek.com