

Quick Installation Guide

English | 繁體中文 | 簡體中文 | 日本語 | Français | Español | Deutsch | Português | Italiano | Türkçe | Polski | Русский | Česky | Svenska | العربية

FD7141(V) Network Camera

Outdoor • Vandal-proof • WDR



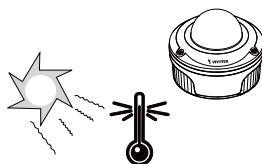


Warning Before Install

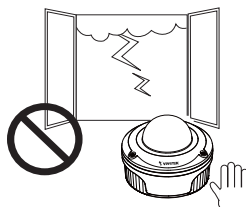
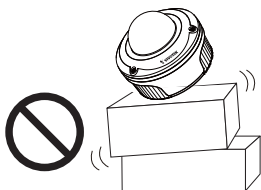
- **Power off the Network Camera as soon as it is found smoking or smelt unusual.**
- **Refer to your user's manual for the operating temperature.**



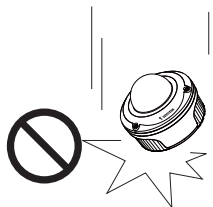
Contact your distributor when such cases happen.



- **Do not place the Network Camera on unsteady surfaces.**
- **Do not touch the Network Camera when it's lightening.**



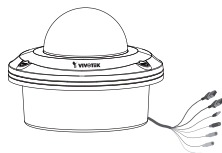
- **Do not insert any object into the Network Camera, such as needles.**
- **Do not drop the Network Camera.**



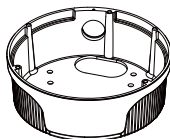
1

Package Contents

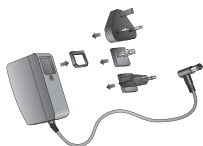
FD7141 (FD7141V)



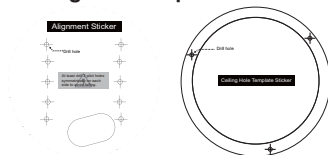
Bottom base



Power adapter



Alignment sticker / Ceiling hole template sticker



L-type hex key wrench / Screws



Plastic cover (FD7141V only)



Quick installation guide / Warranty card



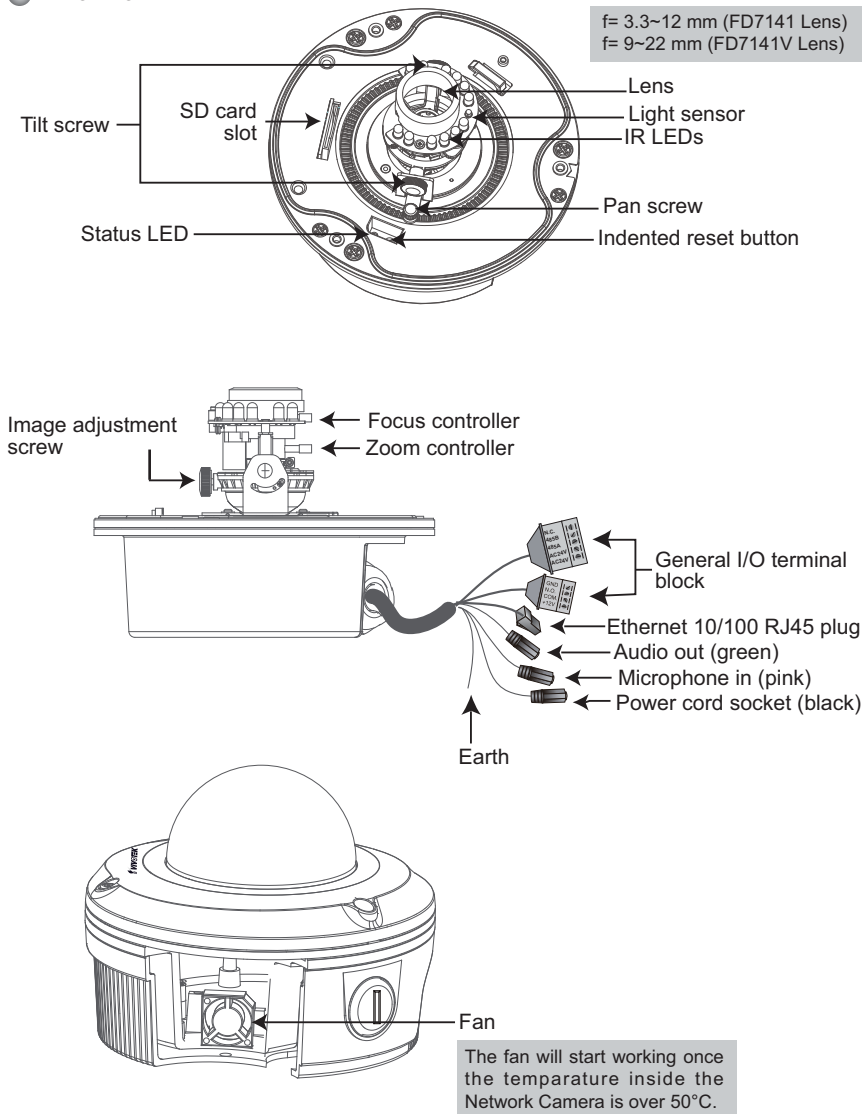
Software CD



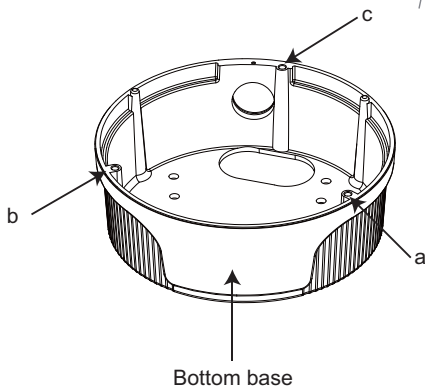
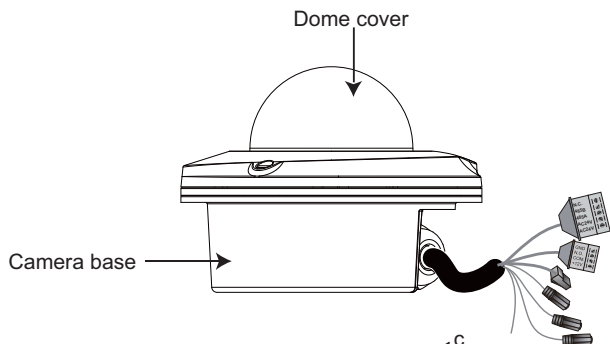
2

Physical Description

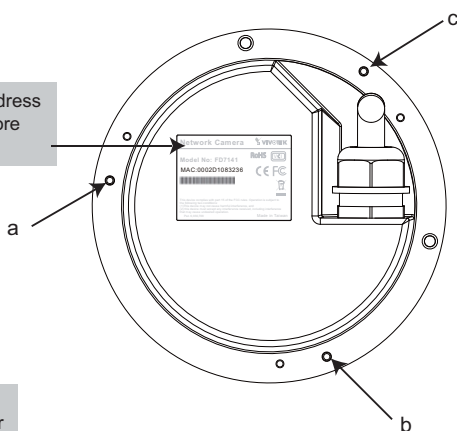
Inner View



● Outer View



Keep a note of the MAC address under the camera base before installing the camera.

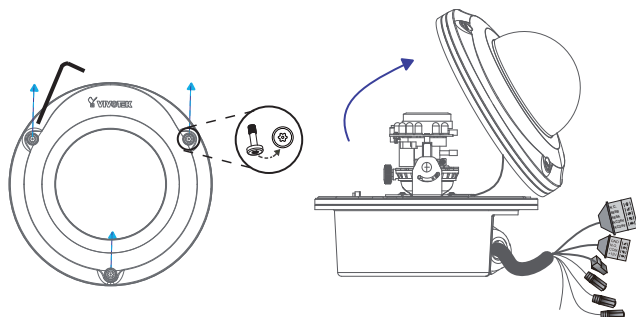


Hole a~c:
Holes for ceiling mount or for
attaching the bottom base.

3

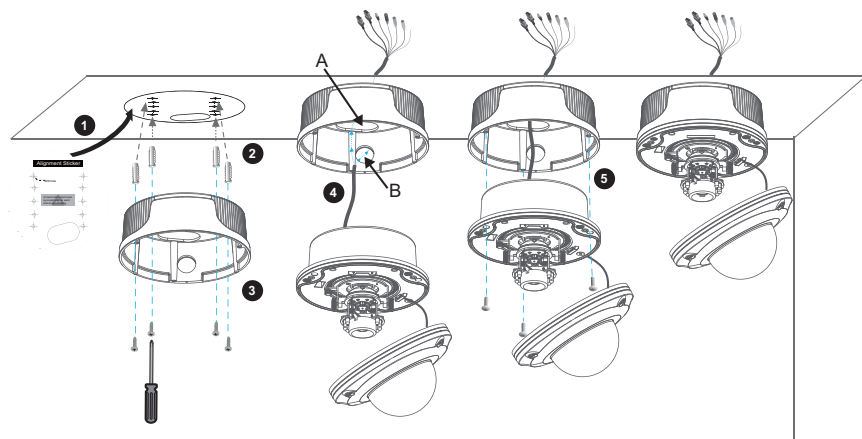
Hardware Installation

First, use the supplied screwdriver to loose three screws and detach the dome cover from the camera base. Then, follow the steps below to install the camera; either to a ceiling or to a wall.



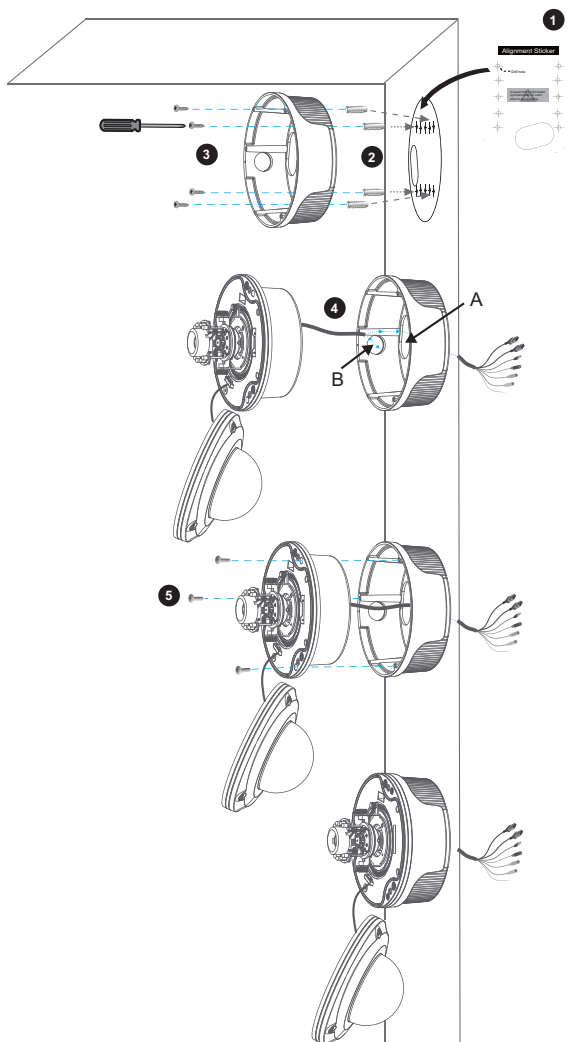
Ceiling mount with the bottom base

1. Attach the supplied Alignment Sticker to the ceiling.
2. Through the 10 circles on the sticker, drill 2 pilot holes symmetrically on each side into the ceiling. Then hammer the supplied four plastic anchors into the holes.
3. Through four holes on the bottom base, insert the supplied four screws to corresponding holes and secure the bottom base with a screwdriver.
4. Feed the cables through hole A or B. If you want to use hole B, remove the rubber with a screwdriver.
5. Secure the camera base to the bottom base with supplied three screws.



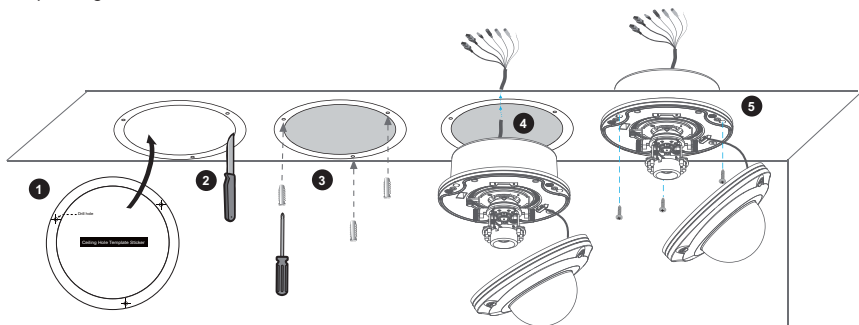
Wall mount with the bottom base

1. Attach the supplied Alignment Sticker to the wall.
2. Through the 10 circles on the sticker, drill 2 pilot holes symmetrically on each side into the wall. Then Hammer the supplied four plastic anchors into the holes.
3. Through four holes on the bottom base, insert the supplied four screws to corresponding holes and secure the bottom base with a screwdriver.
4. Feed the cables through hole A or B. If you want to use hole B, remove the rubber with a screwdriver.
5. Secure the camera base to the bottom base with supplied three screws.



Ceiling mount without the bottom base (Embedded)

1. Attach the supplied Ceiling Hole Template Sticker to the wall.
2. Dig a hole along the inner circle of the sticker.
3. Through the 3 circles on the sticker, drill 3 pilot holes into the ceiling. Then hammer the supplied three plastic anchors into the holes.
4. Mount the Netrok Camera to the ceiling and feed the cables.
5. Through the three holes on the side of the camera base, insert the supplied three screws to corresponding holes and secure them with a screwdriver.



4 Network Deployment

General Connection (without PoE)

1. If you have external devices such as sensors and alarms, make connections from general I/O terminal block.

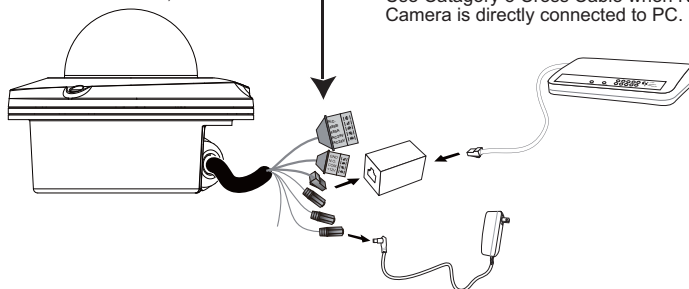


N . C . : No Connector
 N . C . : No Connector
 N . C . : No Connector
 AC24V: Power in AC 24V
 AC24V: Power in AC 24V



G N D : Ground
 D I : Digital Input
 D O : Digital Output
 + 12 V : Power, 12V DC

2. Use the supplied RJ45 female/female coupler to connect the Network Camera to a switch.
 Use Catagory 5 Cross Cable when Network Camera is directly connected to PC.

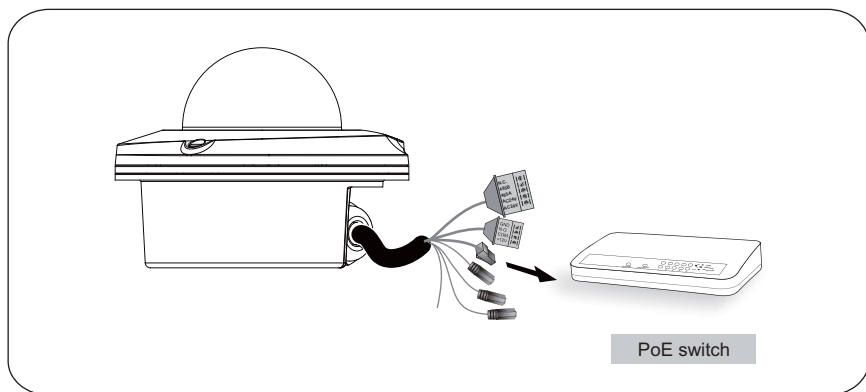


3. Connect the power cable from the Network Camera to a power outlet.

Power over Ethernet (PoE)

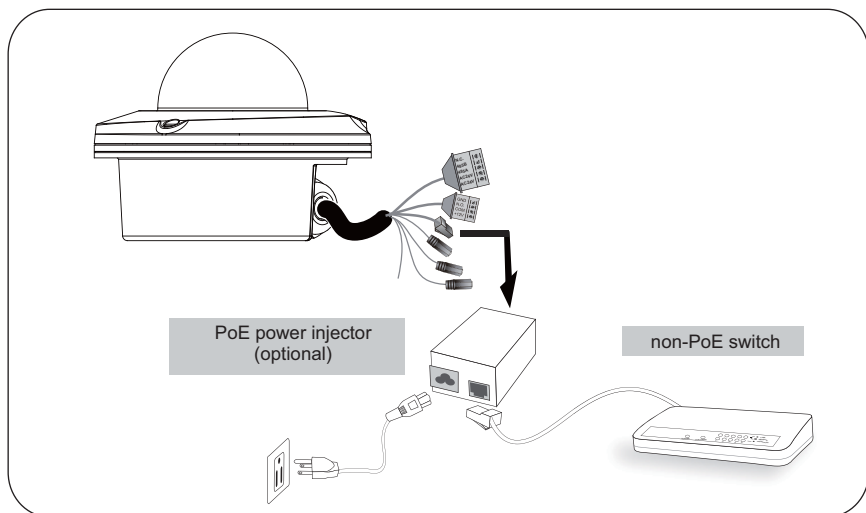
● **When using a PoE-enabled switch**

The Network Camera is PoE-compliant, allowing transmission of power and data via single Ethernet cable. See the following illustration to connect the Network Camera to a PoE-enabled switch via Ethernet cable.



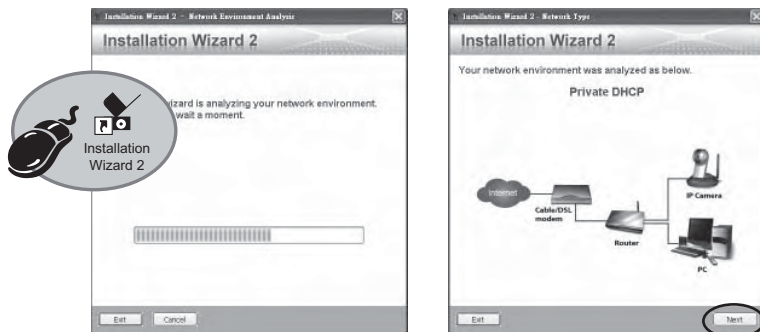
● **When using a non-PoE switch**

Use a PoE power injector (optional) to connect between the Network Camera and a non-PoE switch.

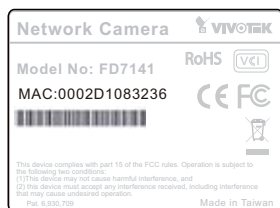


5 Assigning IP Address

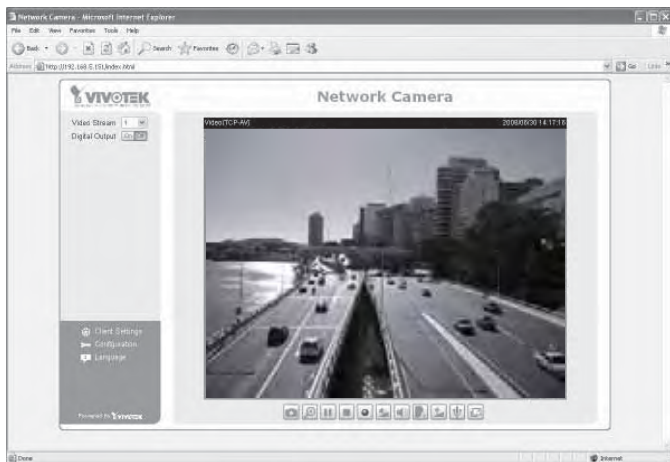
1. Install the "Installation Wizard 2" under the Software Utility directory from software CD.
2. The program will conduct analyses on your network environment. After your network is analyzed, please click on the "Next" button to continue the program.



3. The program will search the VIVOTEK Network Devices in the same LAN.
4. After searching, the main installer window will pop up. Click on the MAC that matches the one labeled on the bottom of your device to connect the Internet Explorer to the Network Camera.



1. Access to the Network Camera from the Internet.
2. Retrieve live video through web browsers or recording software.



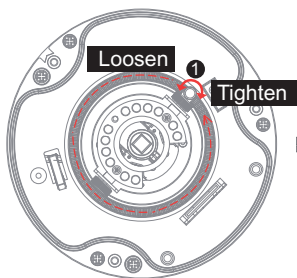
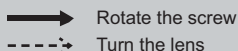
For further setup, please refer to user's manual on the software CD.

7 Adjusting the Lens

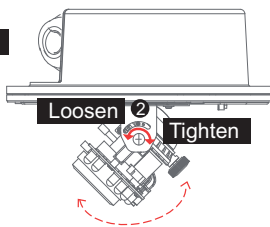
Based on the live image retrieved from the camera, adjust the camera lens by doing the following:

To adjust the viewing angle

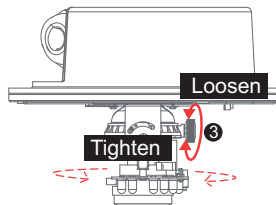
1. Loosen the pan screw and then turn the lens module left and right. Upon completion, tighten the pan screw.
2. Loosen the tilt screws on both side of the camera and then turn the lens module up and down. Upon completion, tighten the tilt screws.
3. Loosen the image adjustment screw and then turn the lens to adjust the image orientation. Upon completion, tighten the image adjustment screw.



Pan 350°



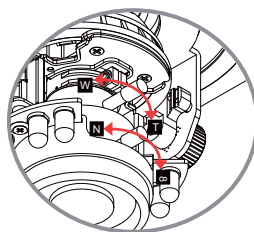
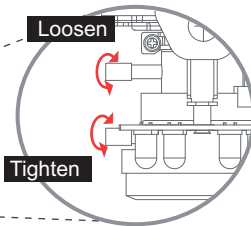
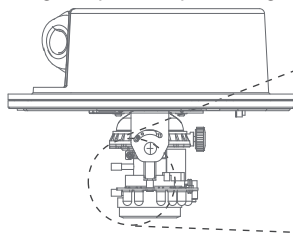
Tilt 95°



Rotate 350°

To adjust the zoom factor and focus range

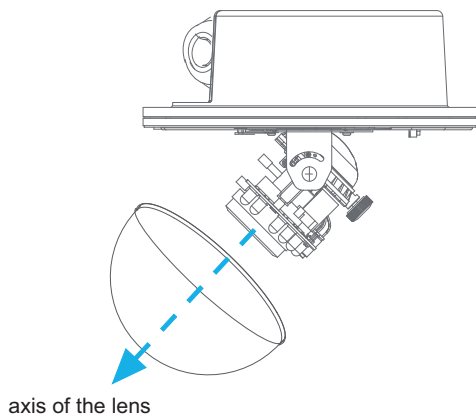
1. Loosen the zoom controller and then adjust zoom factor by moving the controller left and right. Upon completion, tighten the zoom controller.
2. Loosen the focus controller and then adjust focus range by moving the controller left and right. Upon completion, tighten the focus controller.



DO NOT over tighten the controllers. Doing so would damage the structure of camera lens.

Note

If you use **FD7141V** (f= 9~22 mm), please hold the supplied plastic cover in front of the lens while adjusting the focus controller, as the illustration below.



8

Completion

Attach the dome cover to camera. Secure the three dome screws with the supplied screwdriver. Finally, make sure all parts of the camera are securely installed.

