

# VIDEO MANAGEMENT SOFTWARE

## Quick Installation Guide



### ST7501 Free-bundled

This guide describes the basic functions of ST7501

All detailed information is described in the user's manual.

# ***Table of Contents***

---

<i>Getting Started</i> .....	2
Minimum system requirements .....	2
<i>ST7501 Installation</i> .....	3
Installing the ST7501 software .....	3
<i>ST7501 LiveClient Configuration</i> .....	4
Activating ST7501 LiveClient .....	4
User interface of ST7501 LiveClient .....	4
Select a Language for User Interface .....	5
How to add devices .....	5
How to delete network cameras/video servers .....	7
How to add user accounts .....	8
<i>ST7501 Playback Configuration</i> .....	9
Activating ST7501 Playback .....	9
User interface of ST7501 Playback .....	9
How to view recorded videos .....	10

This quick installation guide briefly explains the installation procedure as well as some basic configurations of VIVOTEK ST7501. For further setup and detailed feature descriptions, please refer to the user's manual on the software CD.

## Getting Started

### Minimum system requirements

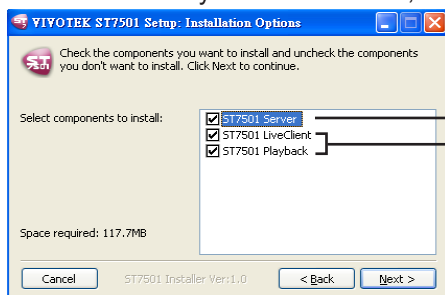
Before installing the ST7501 software, make sure your system meets the following recommended minimum hardware requirements.

Server	
Operating System	Windows XP Professional (32 and 64 bit), Windows Vista Business
CPU	Intel Pentium 4 or higher (Inter Xeon recommended), minimum 2.0 GHz
RAM	Minimum 1 GB for Windows XP Professional, 2 GB for Windows Vista Business
Network Interface Card	Ethernet, 1 Gbit recommended
Graphics Adapter	AGP or PCI-Express, minimum 1024×768, 16 bit colors
Hard Disk Type	ATA-100, SATA, SCSI, SAS (7200 rpm or faster)
Hard Disk Space	80 GB free (depends on the amount of Network Cameras and recording settings)
LiveClient and Playback	
Operating System	Windows 2K/XP Professional (32 and 64 bit), Windows Vista
CPU	Intel Core 2 quad 2.0 GHz or above
RAM	Minimum 1 GB for Windows XP Professional, 2 GB for Windows Vista Business
Graphics Adapter	AGP or PCI-Express, minimum 1024×768, 16 bit colors Minimum 128MB Video RAM, 512MB recommended
Network Interface Card	Minimum 10/100M, 1Gbit recommended
Hard Disk Type	ATA-100, SATA, SCSI, SAS (7200 rpm or faster)
Hard Disk Space	80 GB free (depends on the amount of Network Cameras and recording settings)

# ST750I Installation

## Installing the ST750I software

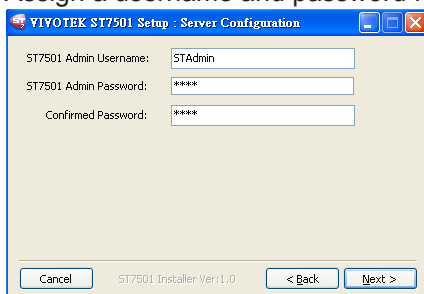
1. Run the **ST7501\_Setup.exe** program on your computer, and specify a location to install.
2. Select the items you want to install, and then click **Next** to continue.



Server application

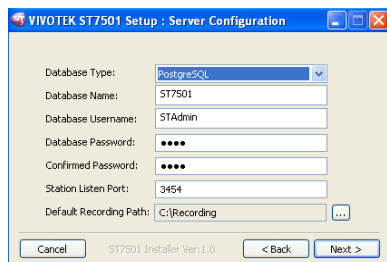
Client applications

3. Assign a username and password for the ST7501 Server.



4. Choose a database.

- If you have already installed a database, select it on the drop-down list, enter related information in the blanks, and then click **Next** to continue.
- If you don't have a database, select PostgreSQL on the drop-down list and then click **Next** to continue.

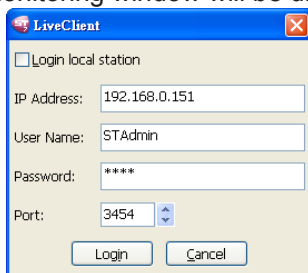


5. Wait for the whole installation procedure to complete.

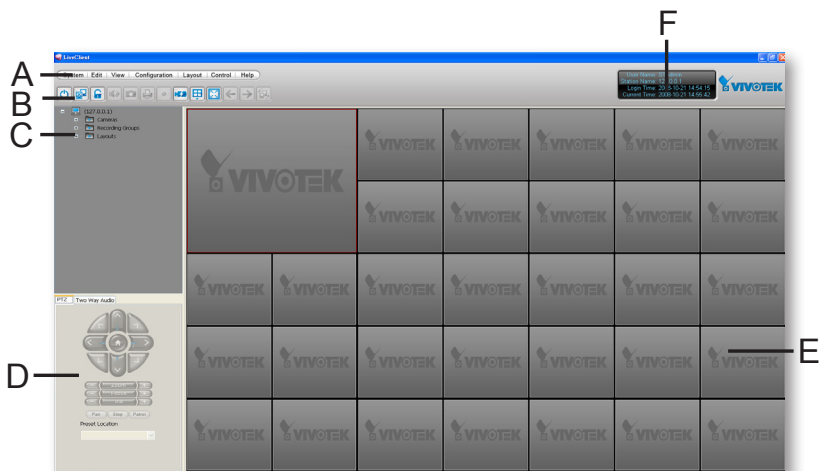
# ST750I LiveClient Configuration

## Activating ST750I LiveClient

1. After installation, run the **ST750I LiveClient** program.
2. Enter the IP address, username, password and communication port of the ST750I Server in the following window.
3. Click Login, the monitoring window will be displayed.



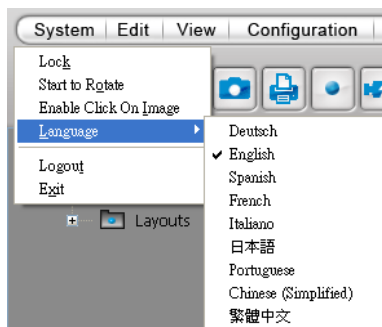
## User interface of ST750I LiveClient



- A. Menu bar    B. Quick access bar    C. Device tree  
D. Camera control panel (PTZ control panel / Two way Audio control panel)  
E. Live video monitoring window    F. Status panel

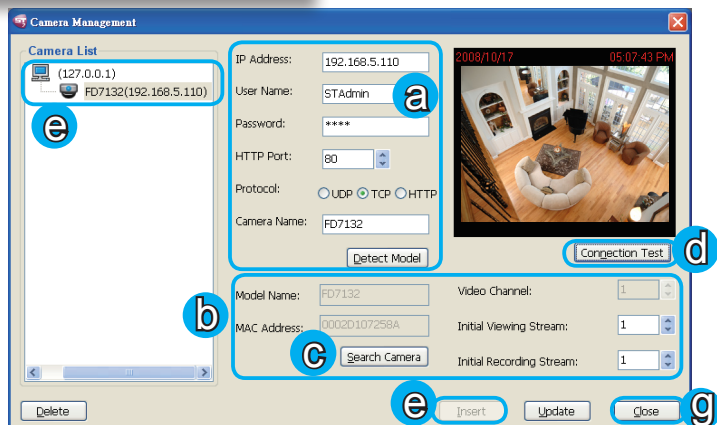
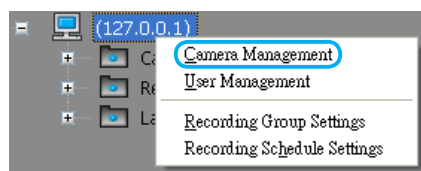
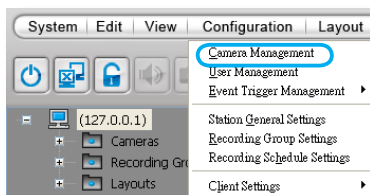
# Select a Language for User Interface

ST7501 currently supports multi-language user interface, and language options are available in: English, Deutsch, Español, Français, Italiano, 日本語, Português, 简体中文 and 繁體中文. Please click **System > Language** on the menu bar to select a desired language.

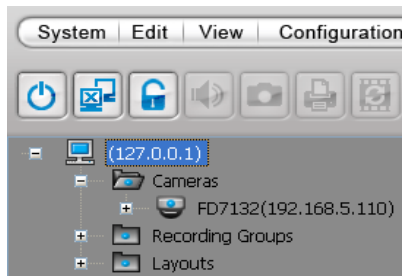


## How to add devices

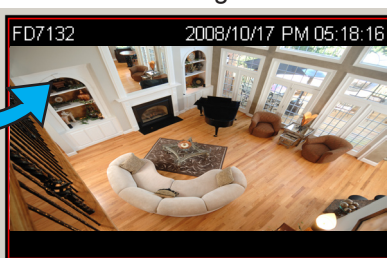
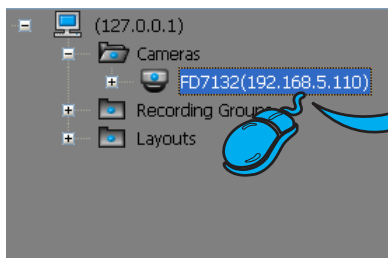
Select a station on the device tree; click **Configuration > Cameras management** on the menu bar (or **right-click** the target station, and then select **Cameras Management**). The camera management window will pop up.



- a. Enter the device's IP address and Camera Name (Use Name and Password if necessary), then click **Detect Model** to detect the camera/video server.
  - b. The model name and MAC address of the device will show up in the blanks if the connection is successful. Specify the channel index for multi-channel video server; specify the recommended monitoring and recording stream for camera.
  - c. You can also click **Search Camera** to search for a list of cameras/video servers in the same LAN.
  - d. Click **Connection Test** to preview the live video.
  - e. Click **Insert** to add the device to the station, and it will show up under the device tree.
  - f. To add more devices to the system, repeat the above steps. You can manage up to 32 channels at the same time.
  - g. Click **Exit** to close the camera management window and return to the monitoring window.
2. In the LiveClient monitoring window, click the plus sign (+) to expand the device tree of inserted devices.

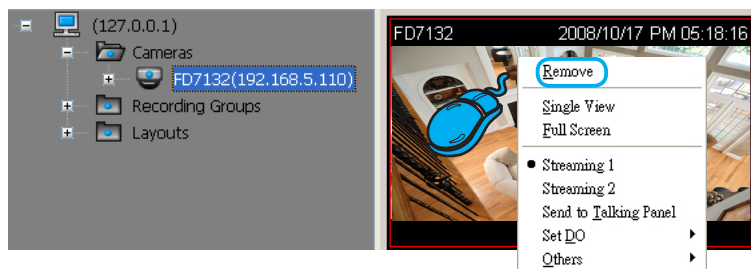


3. The server will automatically add newly-inserted device to video cell for live viewing. You can also drag-and-drop a device from the device tree to one of the video cells in the monitoring window.



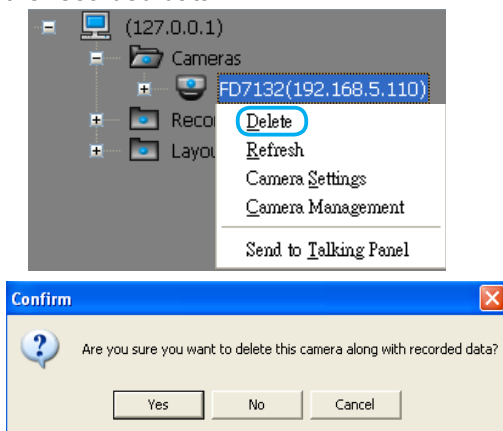
# How to delete network cameras/video servers

1. To remove a device from the monitoring window, **right-click** the video cell and select **Remove**.



2. To remove a device from ST7501, select the device on device tree and **right-click** to delete.

Note that a **Delete Camera** dialog will pop up. Click **Yes** to delete the device along with recorded data; click **No** to delete the device but remain the recorded data.

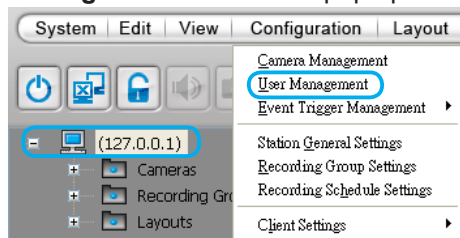




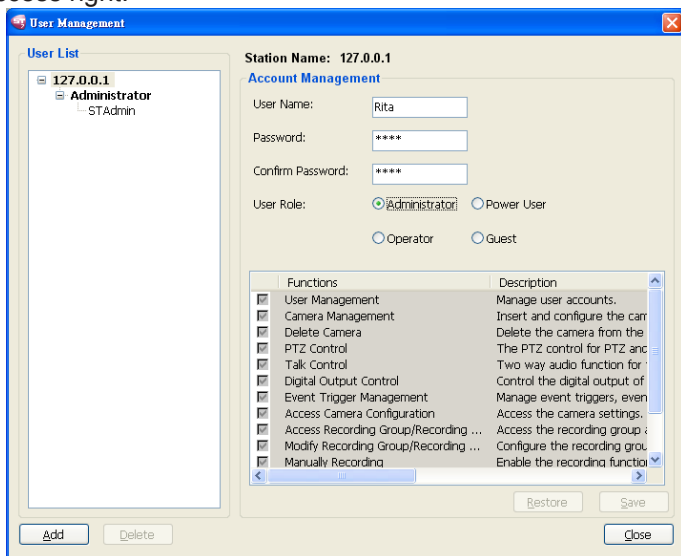
# How to add user accounts

You can create user accounts with different level of privileges.

1. To add a new user to the server, select the station on the Device tree and click **Configuration > User Management** on the Menu bar. The **User Management** window will pop up.



2. Enter the user name, password and specify the user role. In the below column, uncheck the privileges if you want to limit the access right.

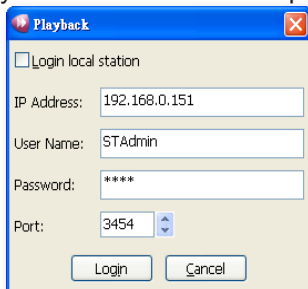


3. When all settings are done, click **Add** to add the user account to the server and the user name will show up on the User List.

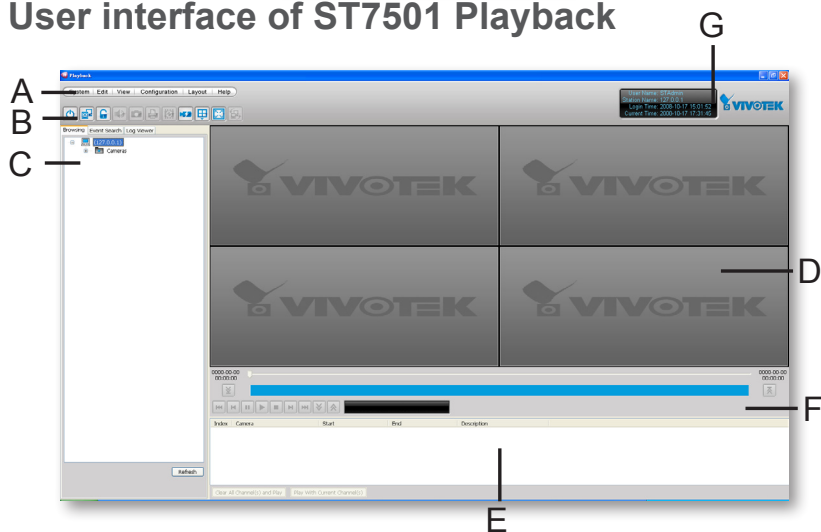
# ST750I Playback Configuration

## Activating ST750I Playback

1. After installation, run the **ST750I Playback** program.
2. Enter the IP address, username, password and communication port of the ST750I Server in the following window.
3. Click Login, the playback window will be displayed.



## User interface of ST750I Playback

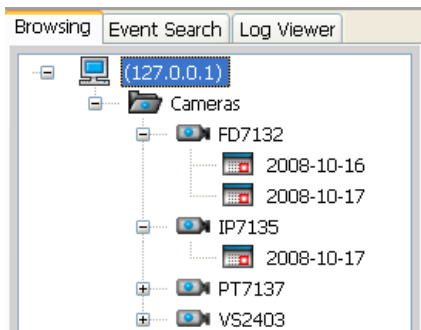
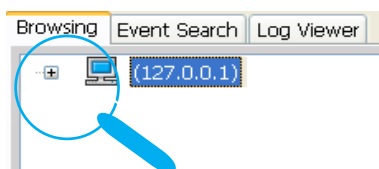


- A. Menu bar    B. Quick access bar    C. Query panel (Browsing/Event search/Log viewer)    D. Recorded video playback window  
E. Video clips list    F. Playback control panel    G. Status panel

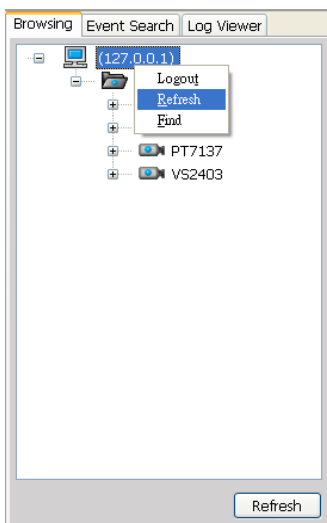
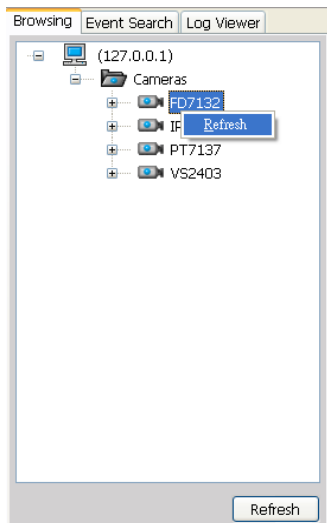
# How to view recorded videos

Please follow the steps below to select a video clip:

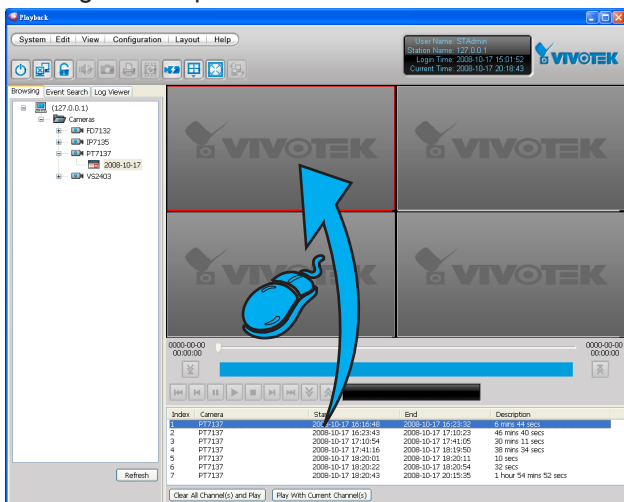
1. In the ST7501 Playback window, click the plus sign (+) to expand the device tree.



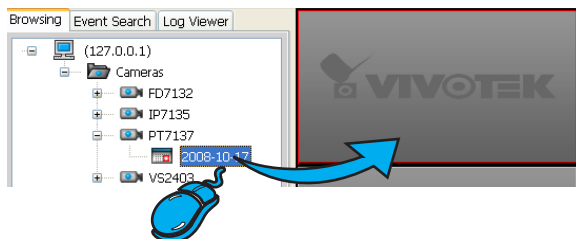
2. **Right-click** a device and click **Refresh** to reveal the recorded video. If you want to update all video clips of a station, click the station on the device tree and Refresh it.



3. The recorded videos will be listed on the video clip list. Select one and then drag-and-drop it to one of the video cells.



4. If you want to review all clips recorded on the same date, select a date and then drag-and-drop it to one of the video cells.



5. To remove a video clip from the video viewing window, right-click on the video cell and select **Remove**.

